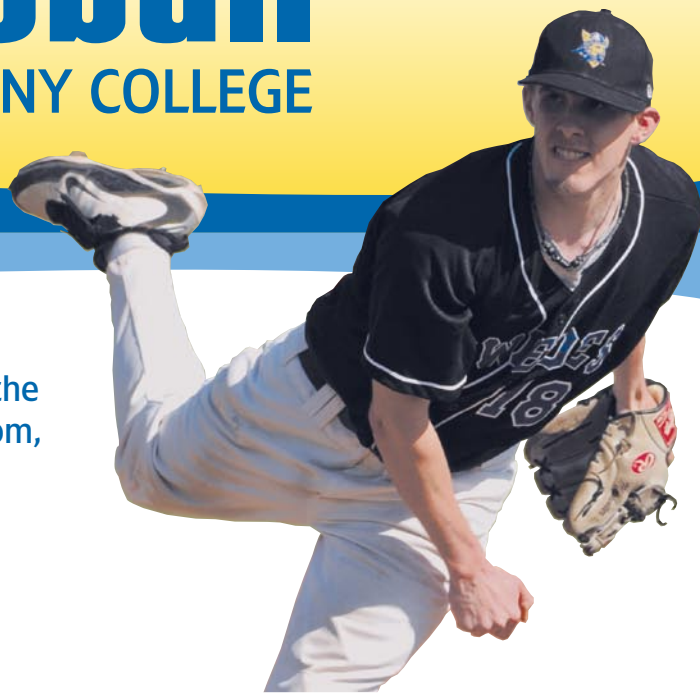


Baseball

AT BETHANY COLLEGE



The main focus is not only to make winners on the field, but also to prepare winners in the classroom, within families, and in life.

The Bethany College baseball program has a tradition of excellence. Since 2000, the team earned NAIA regular season and pre-season rankings, two KCAC championships, two KCAC tournament championships, one runner-up, and one finish as NAIA Region IV runner-up.

The program is not, however, resting on past results. The baseball field has been renovated, including a new infield playing surface. Incoming quality student-athletes make

tremendous contributions to the program, and the program is also committed to making the Bethany College community better.

Coach Cantrell's goal for developing players is not only to make them winners on the field, but also to prepare them to be winners in the classroom, within their families, and in life. Taking care of details on a day-to-day basis and being able to put things in proper perspective are a winning formula for baseball and life.

Thank you for your consideration of Bethany College. Our people are our greatest strength, and we invite you to get to know us and feel comfortable on campus.



Head Coach Jeremy Cantrell

Before coming to Bethany College in 2008, Coach Cantrell spent two years as an assistant coach at Barton County Community College in Great Bend, Kan. While he was at Barton County, the junior college program was one of the most highly regarded in Kansas,

and many baseball team players were sent on to four-year schools. Coach Cantrell was also the pitching coach at NCAA Division I Centenary College in Shreveport, La. While at Centenary, the Gents played one of the toughest schedules in the country, and the pitchers set school records for strikeouts in a game and season. Coach Cantrell began his coaching career as an administrative assistant at NCAA

Division I, University of the Pacific in Stockton, Calif.

Coach Cantrell has had success with summer coaching as well. In the summer of 2002, he coached in the prestigious Cape Cod Baseball League. Many players are currently playing in Major League Baseball. He has also coached the Wenatchee AppleSox, now in the West Coast Collegiate Baseball League, and won a league championship. He was the head coach for the Wichita Wheat Kings of the Walter Johnson League. Coach Cantrell also coached the Shreveport Orioles to

back-to-back Louisiana State Tournament berths, with the 2005 team finishing second.

Coach Cantrell has had the opportunity to learn from some of the best programs in the country by working camps at Stanford University, University of Arizona, University of Mississippi and University of Kansas.



Baseball

AT BETHANY COLLEGE

Contacting Coaching Staff:

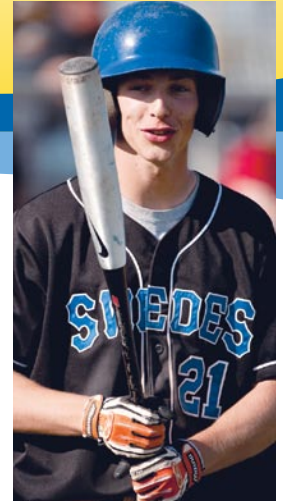
Jeremy Cantrell

Head Baseball Coach

Office: Hahn/Stroble-Gibson athletic complex

Phone: (785) 227-3380, ext. 8333

E-mail: cantrellj@bethanylb.edu



Athletics

As a student-athlete at Bethany, you may be eligible for a performance award for playing your sport. Bethany awards academic achievement, athletic skills and performance abilities in theatre, music and art.

Nicknamed the Swedes, Bethany College athletics has a reputation throughout the region for building quality teams. Since 1902, Bethany College has won 149 conference championships. Bethany competes as a member of the National Association of Intercollegiate Athletics (NAIA) and fields these teams:

Men's

- Baseball
- Co-ed Cheer
- Football
- Basketball
- Cross Country
- Golf
- Soccer
- Tennis
- Track and Field
- Wrestling

Women's

- Co-ed Cheer
- Dance
- Basketball
- Cross Country
- Soccer
- Tennis
- Track and Field
- Softball
- Volleyball

Come visit us!

Let us talk with you about our program, show you around and treat you to lunch!

Call our admissions office to set up an appointment.



The basic aims of Bethany's intercollegiate athletic program are:

- to provide opportunities for students to participate in a well-rounded schedule of high-level athletic competition;
- to encourage physical fitness and the development of physical skills and emotional control in students;
- to support the educational goals and mission of Bethany College;
- to foster character, good sportsmanship, school spirit and loyalty in students, staff, faculty and fans.



OFFICE OF ADMISSIONS

(800) 826-2281 OR

(785) 227-3380, EXT. 8113

FAX: (785) 227-8993

EMAIL: admissions@bethanylb.edu

WEB SITE: www.bethanylb.edu

Fast Facts

About Bethany: a four-year, undergraduate liberal arts-based college with a blend of professional programs

Location: Lindsborg, Kan.; 20 miles southwest of Salina, 70 miles north of Wichita, and 200 miles west of Kansas City; within a seven hour drive of St. Louis, Oklahoma City, Tulsa, Dallas, Denver, Omaha, and Sioux City.

Founded: 1881 by Swedish-Lutheran settlers

Religious Affiliation: Evangelical Lutheran Church in America (ELCA)

Degrees and Programs: 40 academic discipline majors and programs of study, 11 education majors within various academic disciplines, and contract majors

Enrollment: About 600 students from 30 states and 14 foreign countries

Student-Faculty Ratio: 10:1; average class size is 12

Athletics: 18 National Association of Intercollegiate Athletics (NAIA) varsity sports

Accreditation: Accredited by the Higher Learning Commission and a member of the North Central Association
www.ncahigherlearningcommission.org
800-621-7440

Bethany Mission Statement: The mission of Bethany College is to educate, develop and challenge individuals to reach for truth and excellence as they lead lives of faith, learning and service.